

**ADDENDUM NUMBER ONE****EXHIBIT H: PERMISSIBLE SOLAR LOCATIONS**

The figures H-1 through H-13 in this exhibit contain aerials of each potential Solar PV site. The red rectangles/polygons delineate rooftops and/or parking lot areas within which Solar PV systems may be proposed. Respondents are responsible for ensuring that any proposed PV systems are built and located such that they would be in compliance with any and all applicable codes, regulations, laws, and ordinances. At sites where there is more potential solar area than needed to achieve the requested PV kWh output, Respondents are directed to avoid roofs if possible and otherwise optimize the location and orientation of the PV systems while also optimizing cost efficiency. The location of the SCE meter associated with each Solar PV System is also indicated in the figures and have been labeled with an 'M' symbol. Electricity usage data is from the most recent fiscal year: July 1, 2014 to June 30, 2015.

**AMENDED** FIGURE H-1: ALLEN AVENUE ELEMENTARY SCHOOL

**AMENDED** FIGURE H-2: ARMA J. SHULL ELEMENTARY SCHOOL

FIGURE H-3: BONITA HIGH SCHOOL

FIGURE H-4: ED JONES EDUCATIONAL CENTER / DISTRICT OFFICE / BUSD  
TRANSPORTATION

**AMENDED** FIGURE H-5: FRED EKSTRAND ELEMENTARY SCHOOL

**AMENDED** FIGURE H-6: GLADSTONE ELEMENTARY SCHOOL

FIGURE H-7: GRACE MILLER ELEMENTARY SCHOOL

**AMENDED** FIGURE H-8: J. MARION ROYNON ELEMENTARY SCHOOL

FIGURE H-9: LA VERNE HEIGHTS ELEMENTARY SCHOOL

**AMENDED** FIGURE H-10: LONE HILL MIDDLE SCHOOL

**AMENDED** FIGURE H-11: OAK MESA ELEMENTARY SCHOOL

**AMENDED** FIGURE H-12: RAMONA MIDDLE SCHOOL

FIGURE H-13: SAN DIMAS HIGH SCHOOL

**ADDENDUM NUMBER ONE**

**Figure H-1: Allen Avenue Elementary School**

740 E. Allen Avenue, San Dimas, CA 91773

SCE Service Account #	SCE Meter #	Annual Electricity Usage (kWh)	Annual Maximum Demand (kW)	Target Annual PV Output (kWh)	Current SCE Rate Schedule
1158926	259000-019218	296,000	192	246,000	TOU-GS2B



Note: If roof PV systems are required to reach desired capacity, District prefers Roof 1 and Roof 2.



**ADDENDUM NUMBER ONE**

**Figure H-2: Arma J. Shull Elementary School**

825 N. Amelia, San Dimas, CA 91773

SCE Service Account #	SCE Meter #	Annual Electricity Usage (kWh)	Annual Maximum Demand (kW)	Target Annual PV Output (kWh)	Current SCE Rate Schedule
1158913	259000-025353	312,000	192	253,000	TOU-GS2A





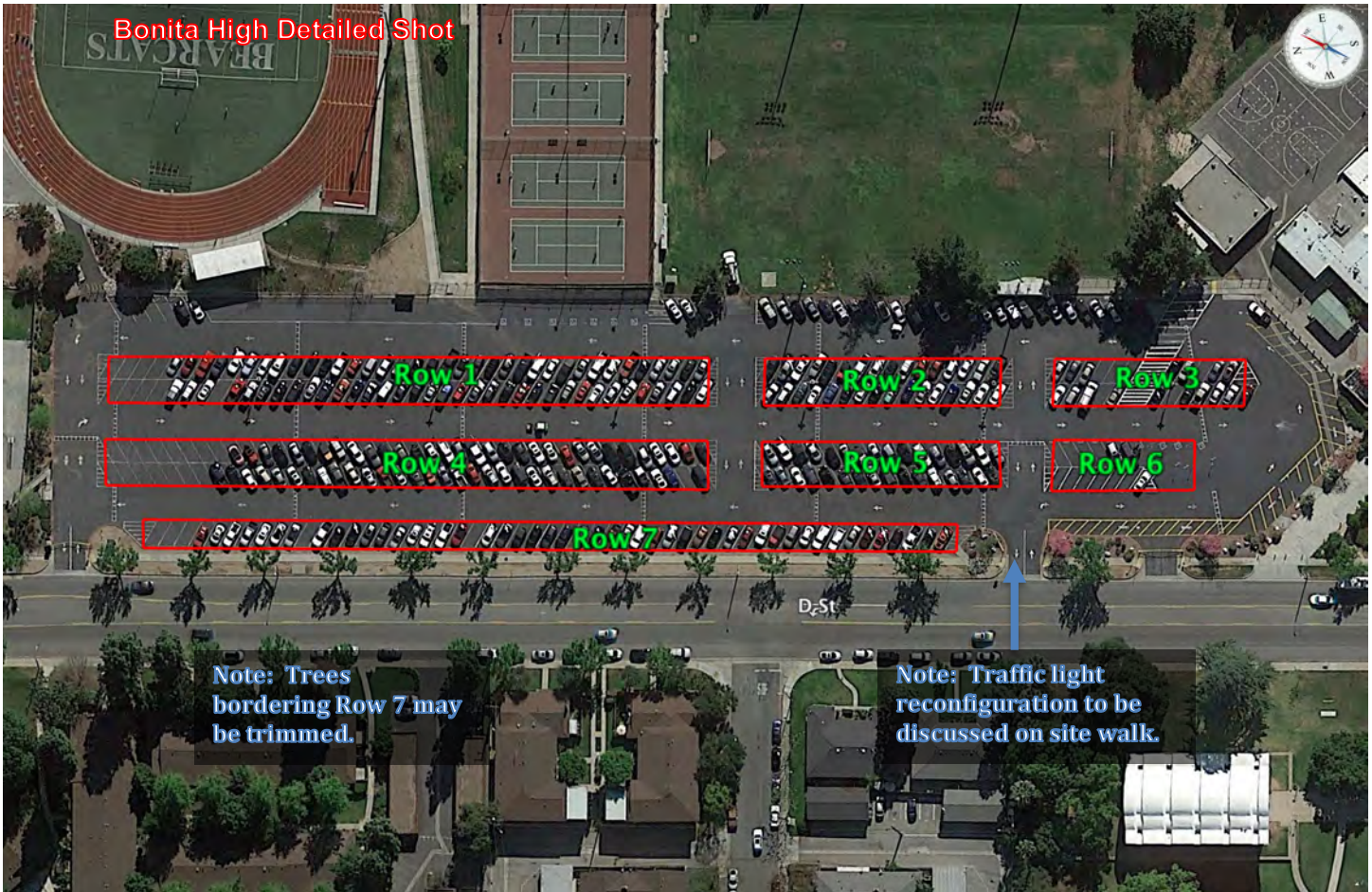
## Figure H-3: Bonita High School

3102 "D" Street, La Verne, CA 91750

SCE Service Account #	SCE Meter #	Annual Electricity Usage (kWh)	Annual Maximum Demand (kW)	Target Annual PV Output (kWh)	Current SCE Rate Schedule
1158946, 26537584	259000- 011683, V349N- 000489	1,600,000	760	1,178,000	TOU-GS2B, TOU-8B





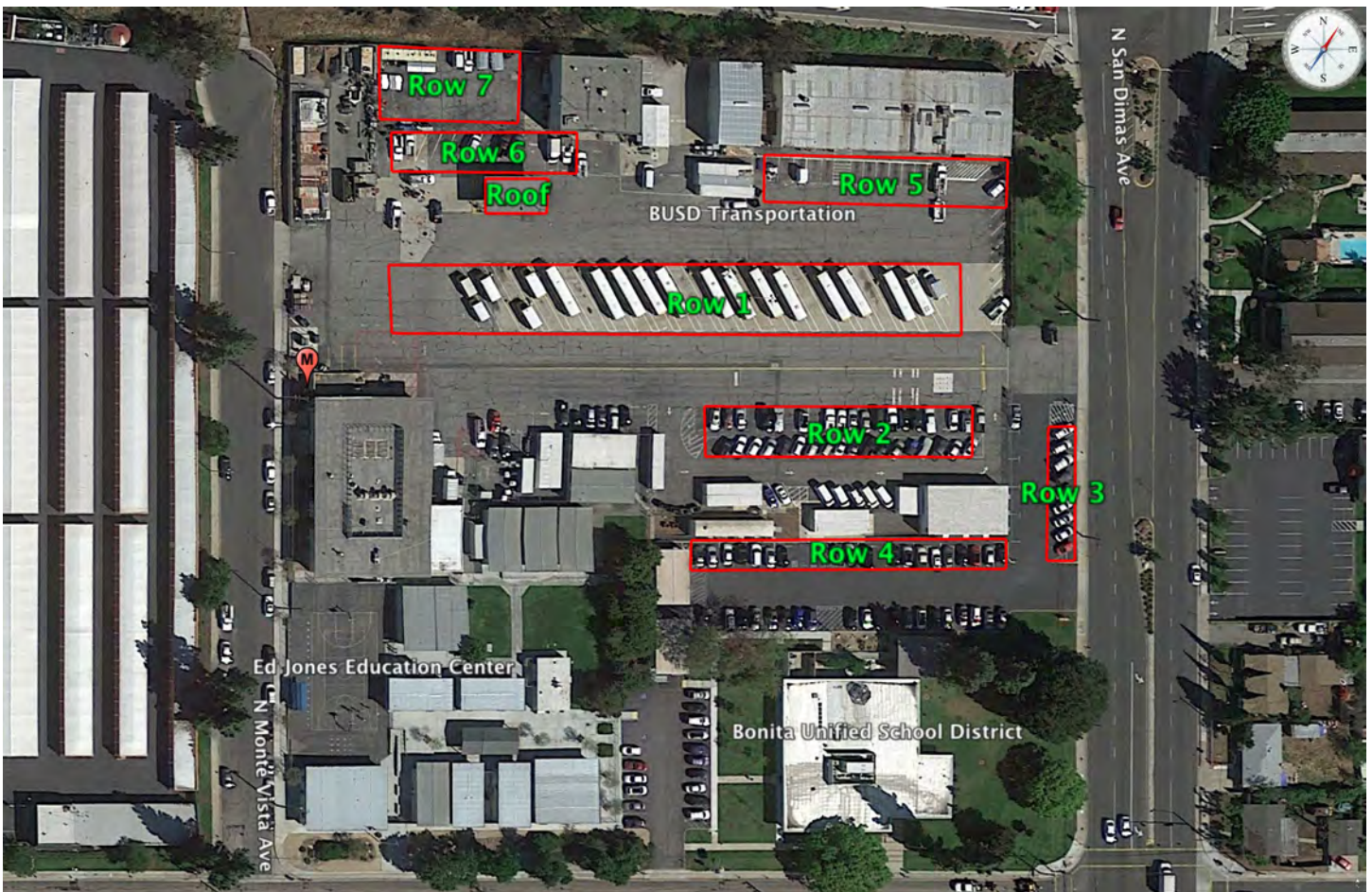




## Figure H-4: Ed Jones Educational Center / District Office / BUSD Transportation

121 W. Allen Avenue, San Dimas, CA 91773

SCE Service Account #	SCE Meter #	Annual Electricity Usage (kWh)	Annual Maximum Demand (kW)	Target Annual PV Output (kWh)	Current SCE Rate Schedule
35486993	V349N-018741	852,000	305	644,000	TOU-GS3A



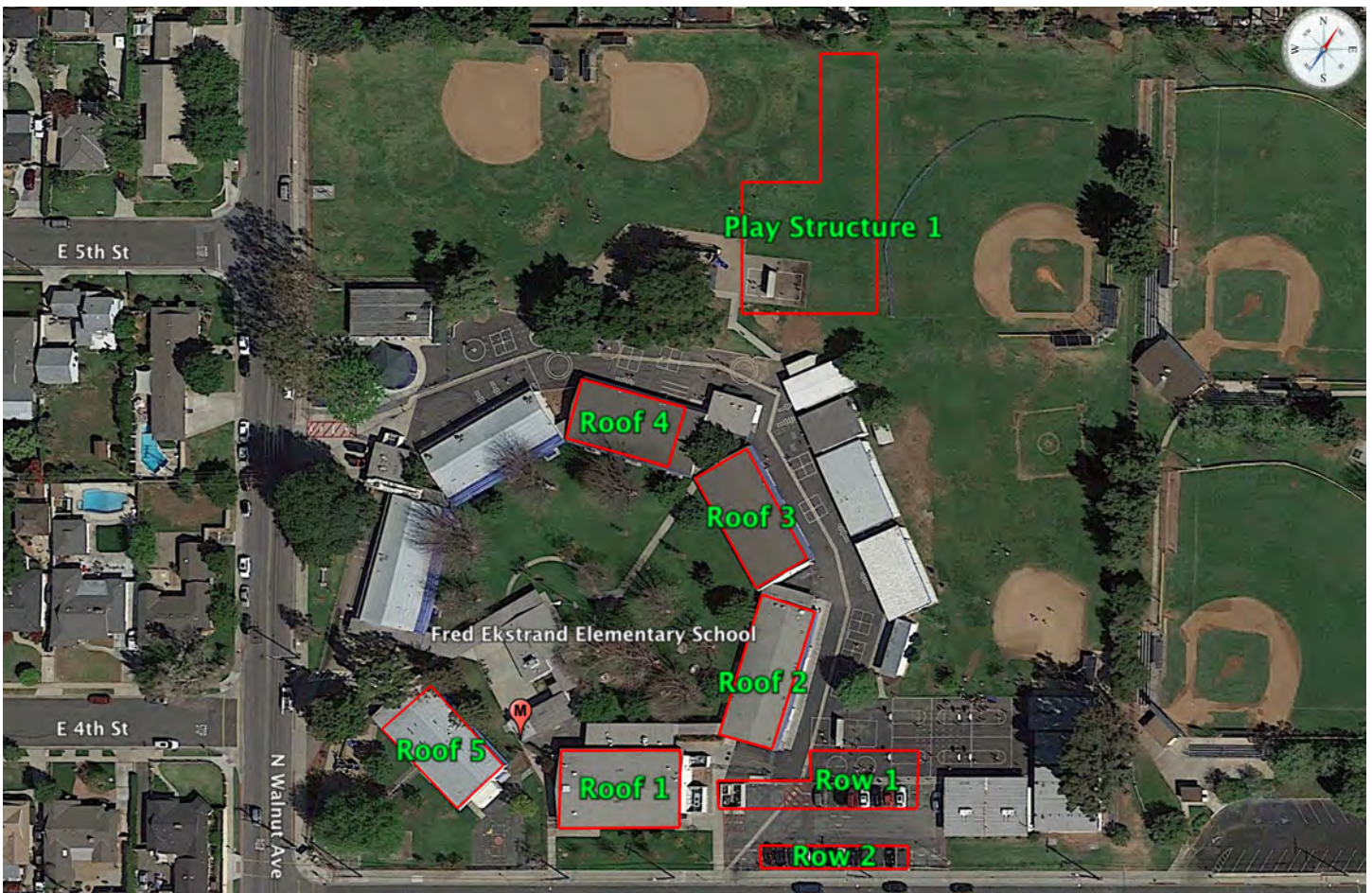


**ADDENDUM NUMBER ONE**

**Figure H-5: Fred Ekstrand Elementary School**

400 N. Walnut, San Dimas, CA 91773

SCE Service Account #	SCE Meter #	Annual Electricity Usage (kWh)	Annual Maximum Demand (kW)	Target Annual PV Output (kWh)	Current SCE Rate Schedule
1158927, 1158928	259000-013937, 223000-010455	400,000	246	305,000	TOU-GS2B, TOU-GS2A



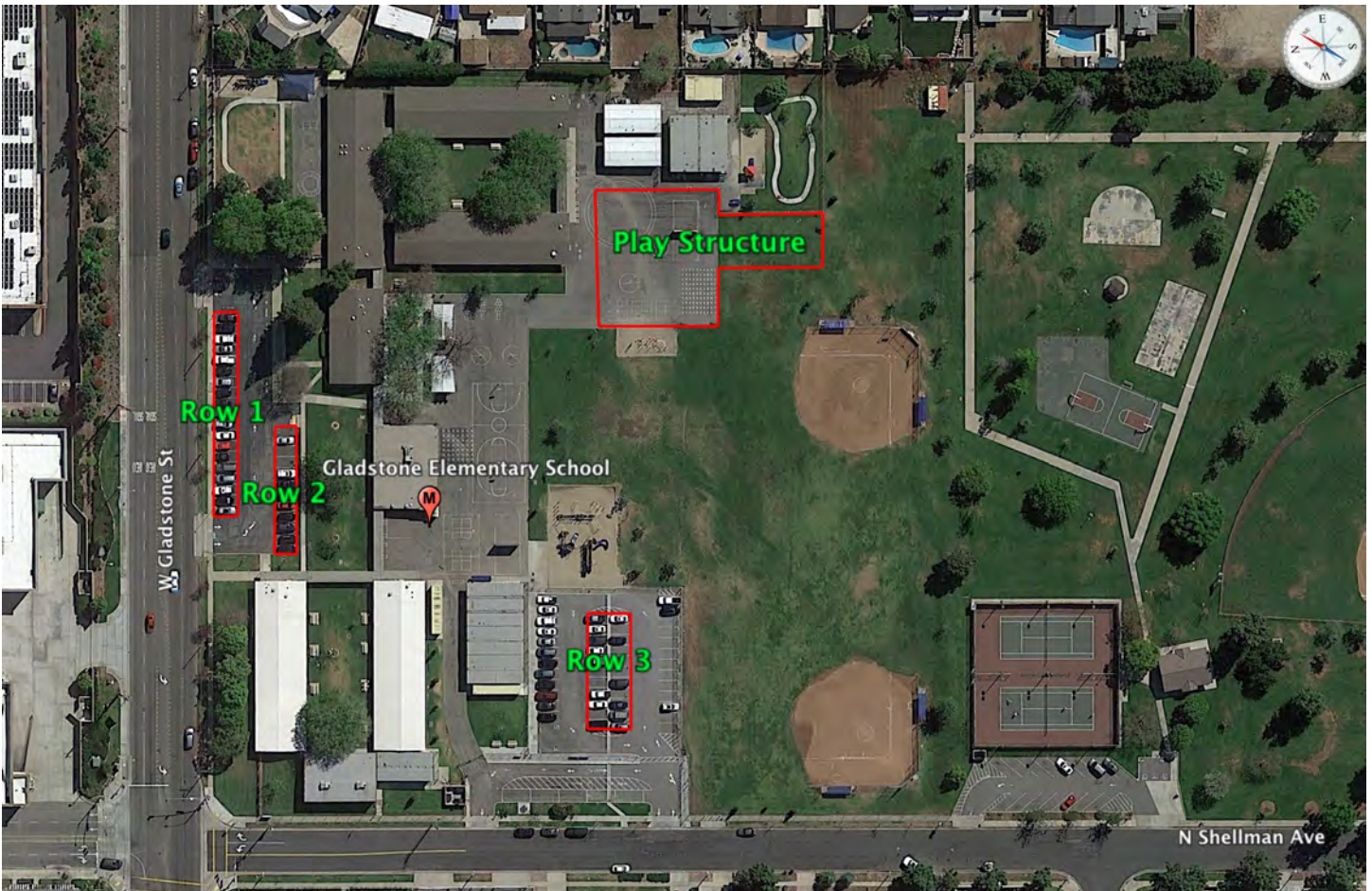


**ADDENDUM NUMBER ONE**

**Figure H-6: Gladstone Elementary School**

1314 W. Gladstone St., San Dimas, CA 91773

SCE Service Account #	SCE Meter #	Annual Electricity Usage (kWh)	Annual Maximum Demand (kW)	Target Annual PV Output (kWh)	Current SCE Rate Schedule
42264025, 1158912	222013-994224, 259000-029164	326,000	193	272,000	TOU-GS1A, TOU-GS2B

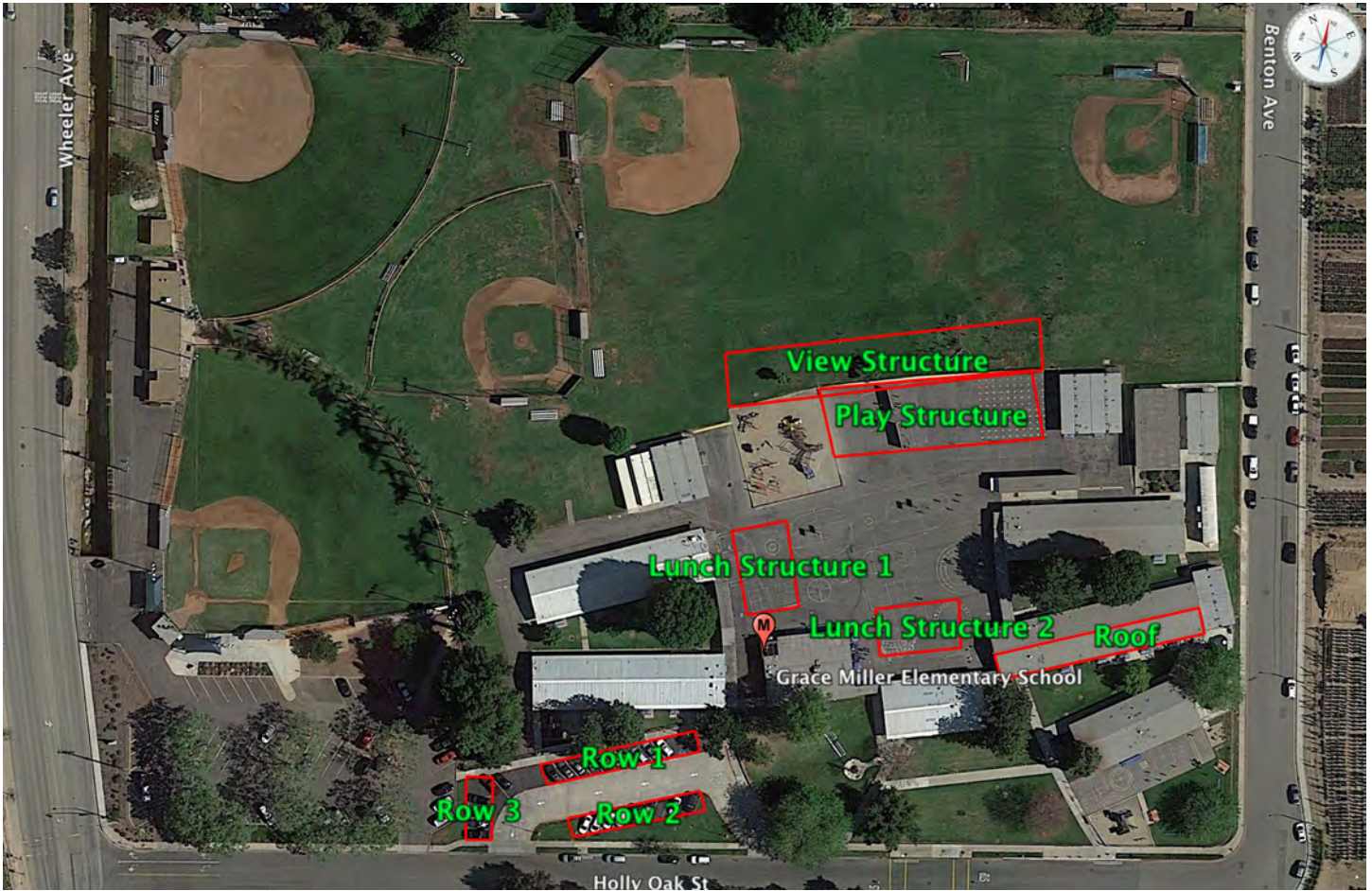




## Figure H-7: Grace Miller Elementary School

1629 Holly Oak St., La Verne, CA 91750

SCE Service Account #	SCE Meter #	Annual Electricity Usage (kWh)	Annual Maximum Demand (kW)	Target Annual PV Output (kWh)	Current SCE Rate Schedule
1158931	259000-029539	309,000	163	243,000	TOU-GS2B



**Note:**

Respondents may propose either the View Structure or the Play Structure, but not both.

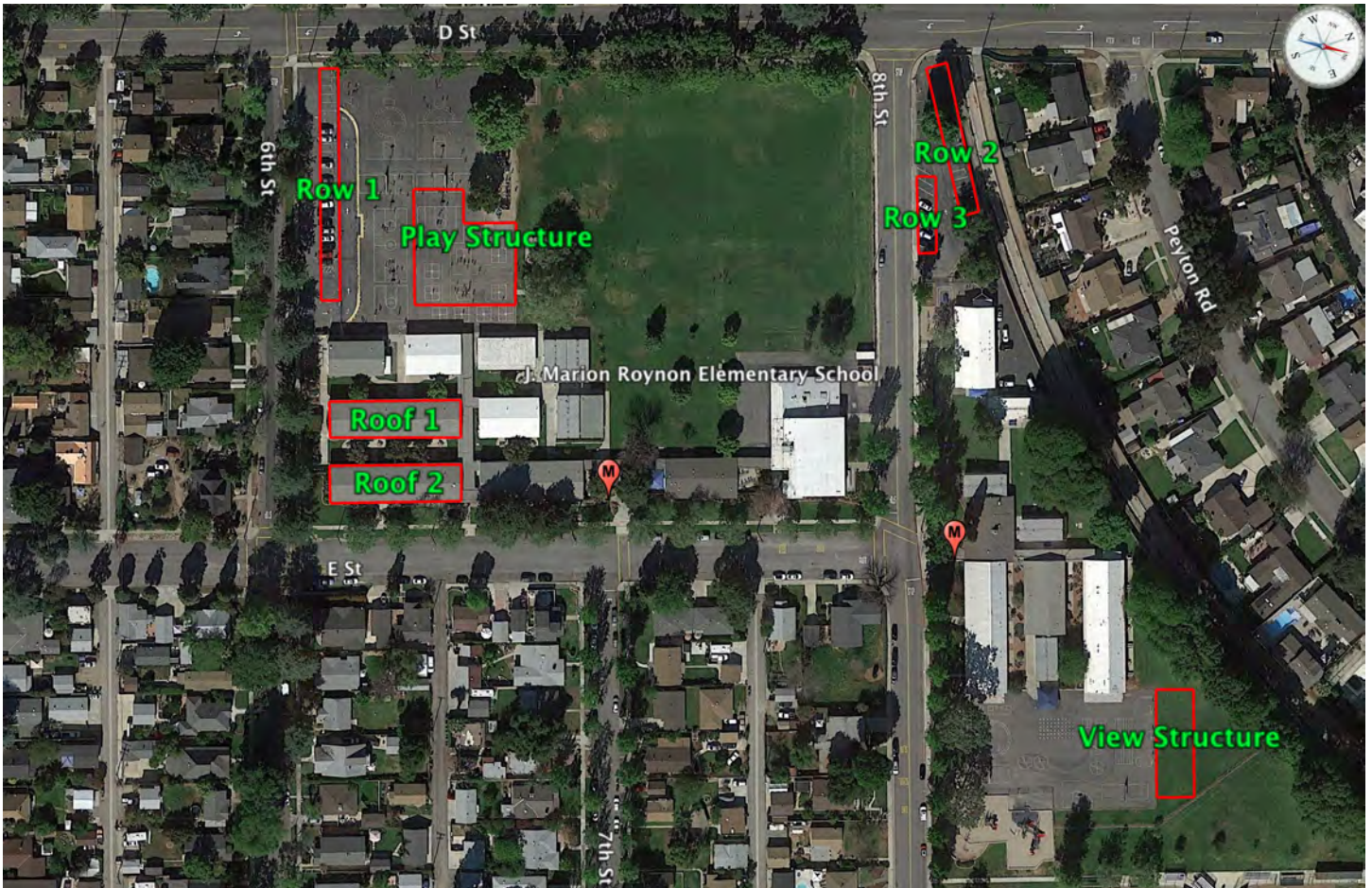


**ADDENDUM NUMBER ONE**

**Figure H-8: J. Marion Roynon Elementary School**

2715 "E" Street, La Verne, CA 91750

SCE Service Account #	SCE Meter #	Annual Electricity Usage (kWh)	Annual Maximum Demand (kW)	Target Annual PV Output (kWh)	Current SCE Rate Schedule
1868915, 1158930	259000-015689, 259000-016486	404,000	259	308,000	TOU-GS2B, TOU-GS2A





## Figure H-9: La Verne Heights Elementary School

1550 E. Baseline, La Verne, CA 91750

SCE Service Account #	SCE Meter #	Annual Electricity Usage (kWh)	Annual Maximum Demand (kW)	Target Annual PV Output (kWh)	Current SCE Rate Schedule
1158947	259000-066665	283,000	186	219,000	TOU-GS2A





**ADDENDUM NUMBER ONE**

**Figure H-10: Lone Hill Middle School**

700 S. Lone Hill, San Dimas, CA 91773

SCE Service Account #	SCE Meter #	Annual Electricity Usage (kWh)	Annual Maximum Demand (kW)	Target Annual PV Output (kWh)	Current SCE Rate Schedule
246000	V349N-019119	785,000	409	620,000	TOU-GS3B



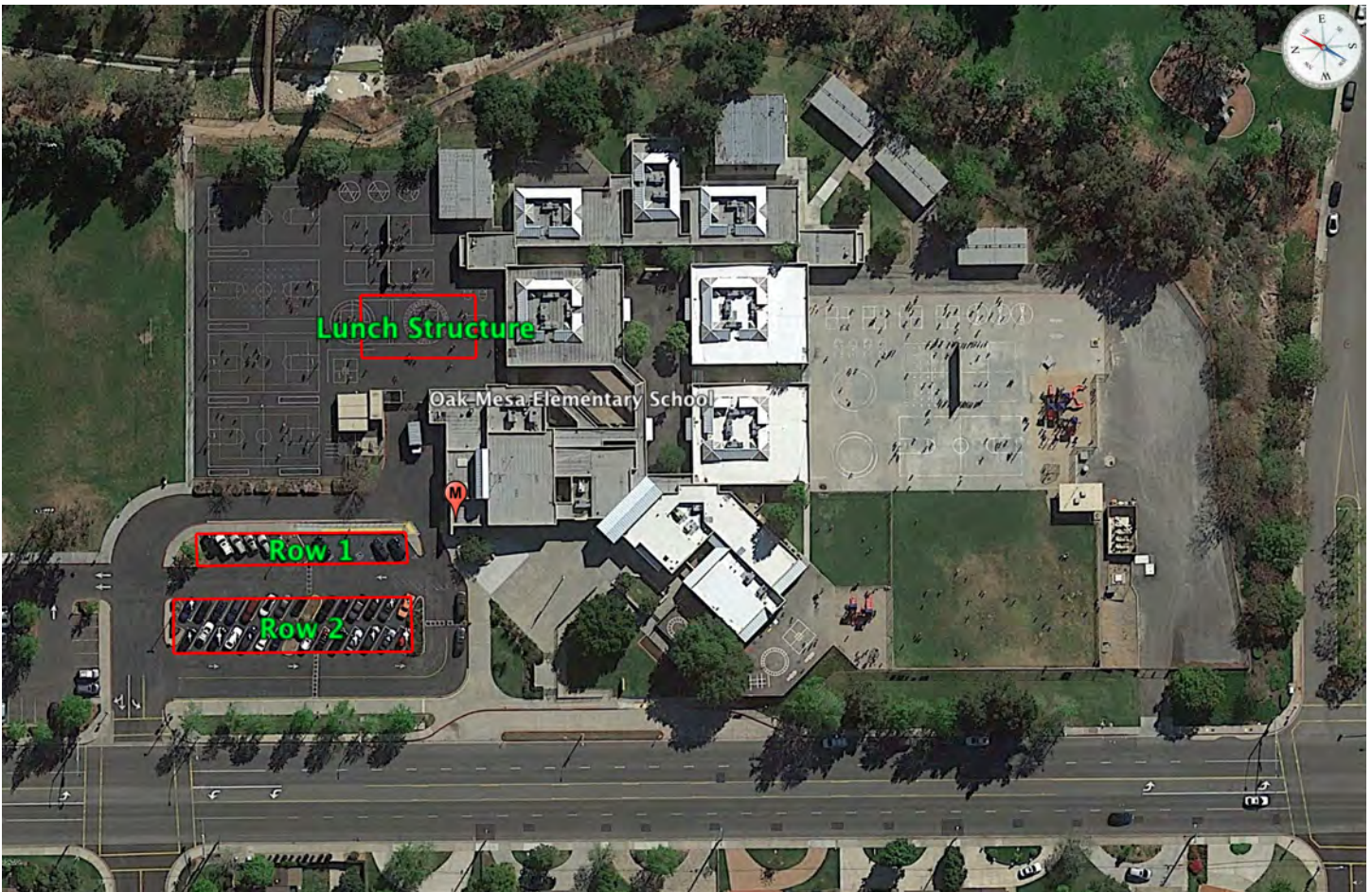


**ADDENDUM NUMBER ONE**

**Figure H-11: Oak Mesa Elementary School**

5200 N. Wheeler, La Verne, CA 91750

SCE Service Account #	SCE Meter #	Annual Electricity Usage (kWh)	Annual Maximum Demand (kW)	Target Annual PV Output (kWh)	Current SCE Rate Schedule
892575	V349N-000332	360,000	288	296,000	TOU-GS3A





**ADDENDUM NUMBER ONE**

**Figure H-12: Ramona Middle School**

3490 Ramona Avenue., La Verne, CA 91750

SCE Service Account #	SCE Meter #	Annual Electricity Usage (kWh)	Annual Maximum Demand (kW)	Target Annual PV Output (kWh)	Current SCE Rate Schedule
1158945	V349N-009454	927,000	425	719,000	TOU-GS3B





## Figure H-13: San Dimas High School

800 W. Covina Blvd., San Dimas, CA 91773

SCE Service Account #	SCE Meter #	Annual Electricity Usage (kWh)	Annual Maximum Demand (kW)	Target Annual PV Output (kWh)	Current SCE Rate Schedule
11415187	259000-016618	1,746,000	838	1,349,000	TOU-8B

